

# USER'S MANUAL

## LUMISCENE KIT - 3002501



### Intended use

The Lumiscene kit is designed to help visualize latent bloodstains based on a chemiluminescence reaction, a reaction which produces light. When Lumiscene comes in contact with blood the peroxidase-like activity of the haemoglobin forms the basis of the production of light.

Lumiscene must be used by trained personnel and only be applied by vaporisation.

We hardly advice to apply Lumiscene with the CSAIR Compressor or a similar compressor.

### Precautions

Do not use the Lumiscene kit when handed with a broken seal and do not use after the expire date.

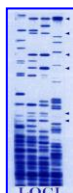
Read the Material Safety Data Sheet for the Lumiscene stock solution and activation tablets prior to use. These MSDS are available in PDF format on our web site under "Download Center".

### Kit contents

- 1 x Large bottle containing 250 ml. of Lumiscene Solution.
- 1 x Sprayer, individually DNA-Free (ETO) packed.
- 1 x Small container containing 4 activation tablets.
- 1 x Instructions for use.

### Mixing procedure

1. Place the bottles on a clean, stable and horizontal surface;
2. Open the 250 ml. Lumiscene Solution;
3. Open the bottle containing the activation tablets;
4. Add the tablets to the stock solution as shown on the picture and screw the cover on the Lumiscene solution firmly  
( 1 tablet = 0,12 % H<sub>2</sub>O<sub>2</sub>, 2 tablets = 0,24 % H<sub>2</sub>O<sub>2</sub>, 3 tablets = 0,36 %, H<sub>2</sub>O<sub>2</sub> en 4 tablets = 0,48% H<sub>2</sub>O<sub>2</sub> );
5. Shake gently for 1 minute after 5, 10 and 15 minutes.  
The Lumiscene is now activated.



Loci Forensics B.V.  
Haverstraat 49  
2153 GD Nieuw-Vennep  
The Netherlands  
E-mail: [info@lociforensics.nl](mailto:info@lociforensics.nl)  
Website: [www.lociforensics.nl](http://www.lociforensics.nl)